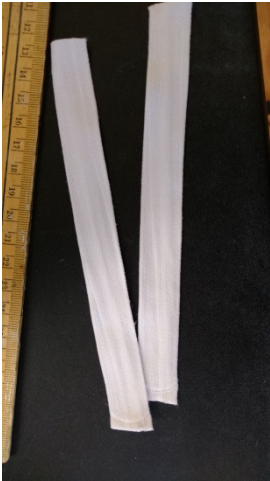


# SOCK SNOWMEN



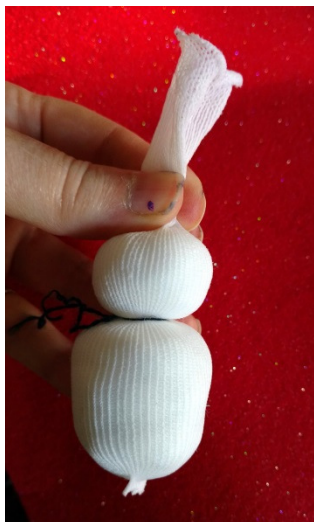
1. Start out with a pair of long tube socks. One for the body and one for the hat.



2. Note that one end of the sock is already sewn closed. This is the toe of the sock and the bottom of your snowman's body.



3. Take the stuffing and start filling your sock. The more stuffing you put in, the more the sock will stretch. For a small snowman, put in enough stuffing to equal the size of a half dollar or a verrrry large grape. Push down the stuffing to make the body round like a snowman's and then pinch the top of the snowman's body to see if it looks like what you want. Once it is, simply tie off this section with some white thread. You have made the lower body of the snowman.



4. Once the body has been tied off, start putting stuffing in again for the head section. This should be filled to be smaller than the body. For the small snowman, there will be more sock than you need. Tie the sock off at the top of the head like a pony tail and cut off what you don't want. I wanted a stacked look between the head and the body, so I ran a needle with thread from the bottom of the snowman to the top of the head and then back down to the bottom and tied off.

5. Glue or sew on buttons for the eyes and nose. Take a little flannel or ribbon for the scarf around the neck. I wanted hands so I glued on some pompoms for hands. Then take the remaining unused sock to make the hat. You can cut off some of the length of the sock to make a short hat or make a long stocking hat for your snowman. Either way, roll up the edge of the sock to make the brim of the hat.



Next, glue or sew on a pom-pom for the end of the hat. Put a little stuffing under the hat if you want it to stand up a little. To keep the hat in place, sew or glue the edges down. Since it is cold outside, I decided with some oil pastel chalk that my snowmen needed a little pink color in their cheeks.